

COMPONENTS OF CONTRACT PLANS SET
ROADWAY PLANS

A DETAILED INDEX APPEARS ON THE
KEY SHEET OF EACH COMPONENT

INDEX OF ROADWAY PLANS

SHEET NO.	SHEET DESCRIPTION
1	KEY SHEET
2-3	TYPICAL SECTIONS
4	GENERAL NOTES
5-6	ROADWAY PLAN
7	ACCESS ROAD PLAN AND PROFILE
9-18	CROSS SECTIONS
19-23	CROSS SECTIONS
24	STORMWATER POND
25	POND DETAILS
26-27	EROSION AND SEDIMENT CONTROL
28	STORMWATER POLLUTION PREVENTION PLAN
29	TRAFFIC CONTROL PLAN
30	SIGNING AND PAVEMENT MARKINGS

INCLUDED IN PLANS BY REFERENCE:

GOVERNING STANDARDS: FLORIDA DEPARTMENT OF TRANSPORTATION, 2013 DESIGN STANDARDS AND REVISED INDEX DRAWING AS APPENDED HERE IN, AND 2013 STANDARD SPECIFICATIONS FOR ROAD AND BRIDGE CONSTRUCTION, AS AMENDED BY CONTRACT DOCUMENTS.

FOR DESIGN STANDARDS CLICK ON THE "DESIGN STANDARDS" LINK AT THE FOLLOWING WEB SITE:

<http://www.dot.state.fl.us/rddesign/>

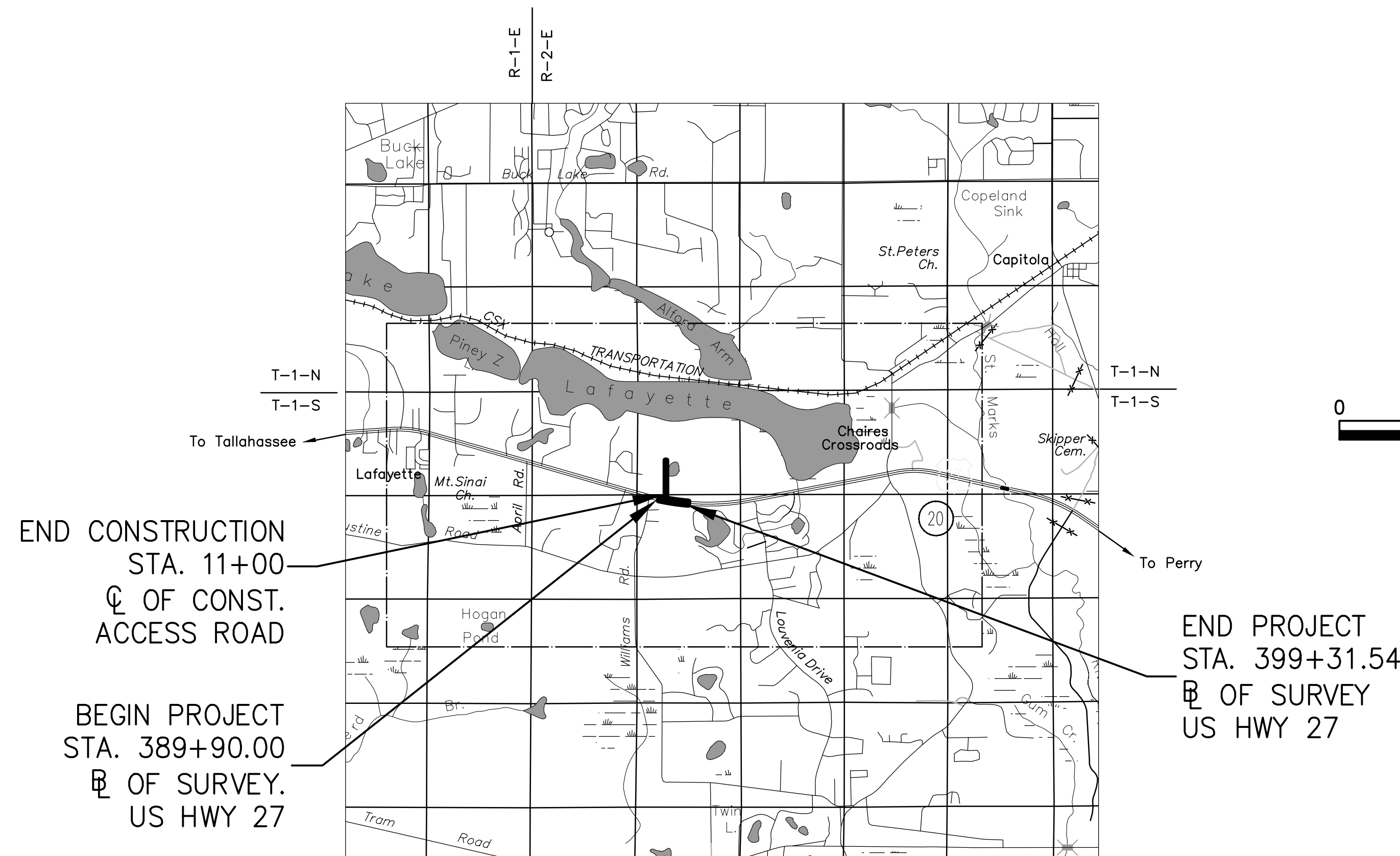
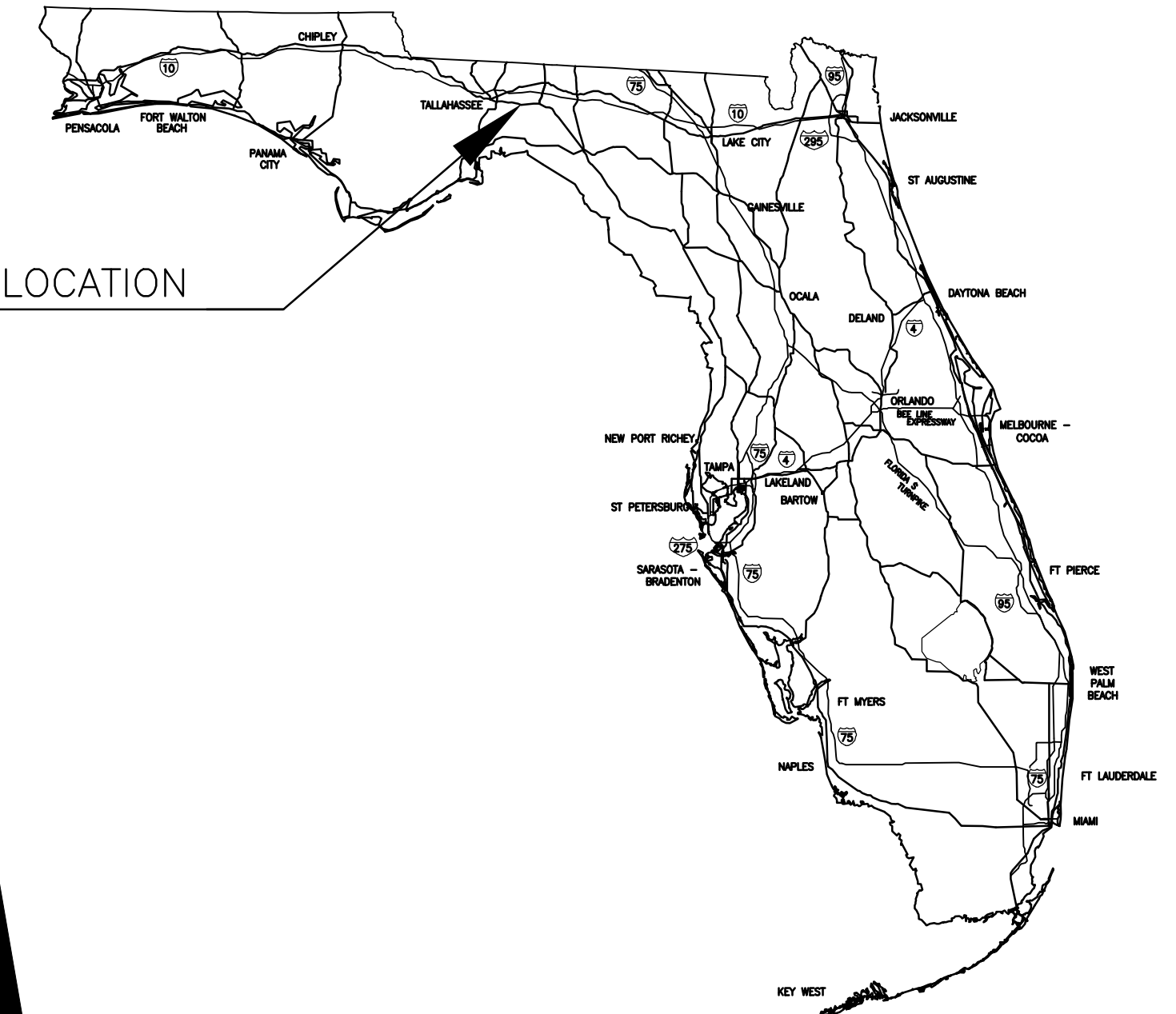
FOR THE STANDARD SPECIFICATIONS FOR ROAD AND BRIDGE CONSTRUCTION CLICK ON THE "SPECIFICATIONS" LINK AT THE FOLLOWING WEBSITE:

<http://www.dot.state.fl.us/specificationsoffice/>

LEON COUNTY
DEPARTMENT OF PUBLIC WORKS

CONSTRUCTION PLANS FOR
APALACHEE REGIONAL PARK
MEDIAN OPENING RELOCATION & ACCESS DESIGN

PROJECT LOCATION



ROADWAY SHOP DRAWINGS
TO BE SUBMITTED TO:
BASKERVILLE- DONOVAN, INC.
325 JOHN KNOX ROAD, BUILDING 200
TALLAHASSEE, FLORIDA 32303
CLEVE DRYDEN, P.E.

ENGINEERS OF RECORD:

BASKERVILLE- DONOVAN, INC.
325 JOHN KNOX ROAD, BUILDING 200
TALLAHASSEE, FLORIDA 32303
Cleve E. Dryden, P.E.
P.E. REG. No. 33115

LEON COUNTY, FLORIDA

LENGTH OF PROJECT		
	ROADWAY	
	LINEAR FEET	MILES
ROADWAY	2841.54	0.538
BRIDGES	0.00	0.00
NET LENGTH OF PROJECT	2841.54	0.178
EXCEPTIONS	0.00	0.00
GROSS LENGTH OF PROJECT	2841.54	0.538

LEON COUNTY PROJECT MANAGER: S. GEORGE SU, P.E.

ROADWAY PLANS PREPARED BY:

BASKERVILLE-DONOVAN, INC.
Innovative Infrastructure Solutions

325 JOHN KNOX ROAD, BLDG. 200
TALLAHASSEE, FLORIDA 32303 (850)656-1212
ENGINEERING BUSINESS: EB-0000340

ORIGINAL SHEETS WERE CREATED USING ANSI D (22" X 34") SHEETS

ATTENTION IS DIRECTED TO THE FACT THAT THESE PLANS MAY HAVE BEEN ALTERED IN SIZE BY REPRODUCTION. THIS MUST BE CONSIDERED WHEN OBTAINING SCALED DATA.

DATE: 5/25/2013

B.D.I. PROJECT NO.: 50922.01

LEON CO. PROJECT NO.:

SET NO.:

REVISIONS:		
DATE	BY	DESCRIPTION

FISCAL YEAR	SHEET NO.
13	1

J:\509_50923.02 Apalachee Parkway Median & Access Road Improvements\DWG\keysheet.dwg, Aug. 01, 2013 - 4:38:00PM, cdryden

APALACHEE REGIONAL PARK